

SHOWCASE HOMES
Features for this 28' x 42' Home

1,176 square feet

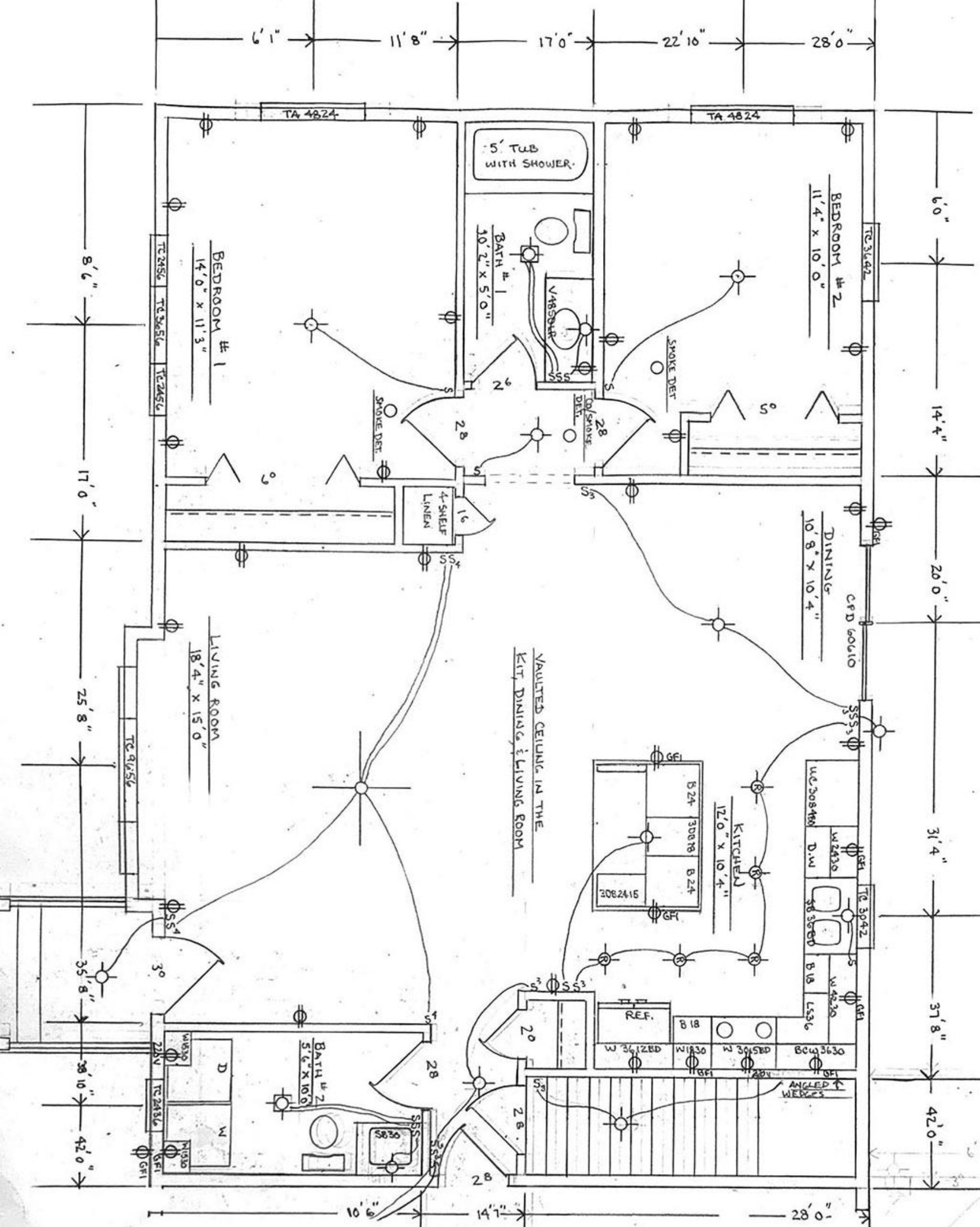
- 2 bedrooms, 1-1/2 baths
- Vaulted ceiling in the kitchen, dining and living room
- Certainteed – Vinyl siding, Savannah wicker color
- Thermo-Tech Windows and Patio Door

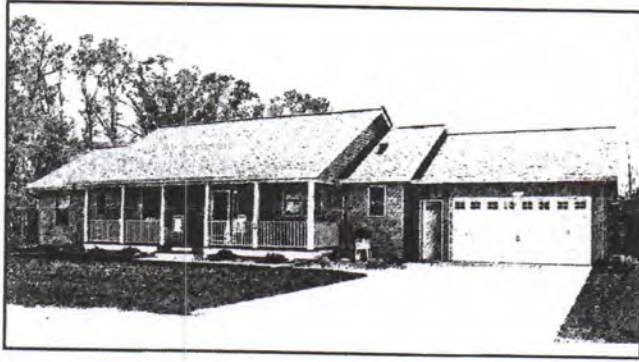
Kitchen

- Woodland Cabinets: oak with saddle stain
- Countertop: WilsonArt HD laminate with Crescent edge and underhung sink

Main bath with tub/shower combo

- Onyx vanity/sink combo





SHOWCASE HOMES

FACTORY CUSTOM BUILT HOMES

11757 State Hwy 29 South
Parkers Prairie, MN 56361

(218) 338-2060

www.ShowcaseHomesMN.com

License # BC-20332830

STANDARD FEATURES IN OUR HOMES

FLOOR CONSTRUCTION

2" X 10" X 24', 26' Or 28' DFL Floor Joist 16" On Center
3/4" Tongue & Groove Plywood (Screwed)

WALL CONSTRUCTION

1. 2" X 6" Studs DFL 16" O.C. Exterior
2. 2" X 4" Studs DFL 16" O.C. Interior
3. 4" X 8" X 1/2" CDX Plywood Wall Sheathing
4. 4 Mil Vapor Barrier On Outside Walls & Ceilings
5. 6" Fiberglass Insulation: R-21 Exterior Walls
6. 1/2" Sheet Rock Tape And Texture With Knock Down Finish
7. 5/8" Sheet Rock Tape And Texture On Ceilings
8. Certainteed Monogram Vinyl Siding Is Standard

EXTERIOR DOOR & WINDOWS

1. Integrity Windows by Marvin Clad Casements Are Standard.
2. Marvin, Anderson & Thermo-Tech Windows Are Available (See Options For Available Styles)
3. Insulated Steel Exterior Doors
4. Sliding Glass Door In Dining Room (See Options Below)

ROOF CONSTRUCTION

1. Manufactured State Approved Trusses 4/12 Pitch - 2' O.C.
2. 4 X 8 X 5/8" CDX Fir Roof Sheathing
3. R-49 Blown Cellulose Insulation In Ceilings With Air Chutes Installed
4. See Note On Insulation In Vaulted Ceilings
5. Edco-Soffit And Fascia Systems
6. GAF Timberline Architectural Shingles Are Standard. Certainteed & Malarkey Brands Are Available

FLOOR COVERINGS

Vinyl & Carpet : A Wide Variety Of Name Brands To Chose From

CABINETS

1. Cabinets By Woodland Or Mid-Continent Villager Style With Solid Oak Fronts Are Standard (Many Styles To Choose From Without Additional Cost)
2. Bathrooms Have Oak Medicine Cabinets With Tri-View Mirrors
3. Standard Kitchens Have 14 Cabinets
4. Bathroom Vanities Per Plan

INTERIOR TRIM & DOORS

1. Base & Window Trim Oak In Ranch Or Heritage Style (Finished In 4-Colors)
2. Flush Interior Doors Oak (Finished In 4-Colors)
3. Flush Bi-Fold Doors On Closets With Oak Jambs

COUNTER TOPS

1. Kitchen Countertops Are Laminate With Upgrades Available To Quartz, Corian, Silestone, Cambria
2. Bath Countertops Are Cultured Marble With Back Splash & Front Finished By SFI, Inc. (Many Color Selections To Choose From)

PLUMBING

1. Pex Lines Installed & Stubbed In
2. DWV-ABS Installed With Vents & Stubbed In
3. Dayton Stainless Kitchen Sinks With Single Lever Delta Faucets
4. 1 Piece Salo Fiberglass Bath Bay (White Or Bisquit) With Single Lever Delta Temperature Controlled Faucet
5. Gerber Oval Bathroom Sink (White Or Almond) With Single Handle Delta Crystal Knob Faucet
6. 1.6 Gallon Toilet
7. Includes Tri-Level Dishwasher
8. Above Floor Duct Work Package For Air Exchanger

ELECTRICAL

1. Electrical By Licensed Electrician
2. 200 Amp Service Square D With Breaker Box
3. Electric Smoke Detectors To Code With Battery Backup
4. Bath Fan Or Fan Light In Bathroom
5. 160 CMF Kitchen Hood Fan (White Or Bisque)
6. GFI Outlets
7. Light Fixture Allowance

MISCELLANEOUS

1. Locksets For Interior & Exterior Doors In Antique Or Bright Brass Finish
2. Pre-Finished Closet Shelving (White Or Oak)
3. Chrome Towel Bars & Tissue Holders

Please Note: This listing may be incomplete or changes may have occurred. Your Showcase Homes representative will have the latest information.

(2-10-15)



SHOWCASE HOMES

FACTORY CUSTOM BUILT HOMES

11757 State Hwy 29 South

Parkers Prairie, MN 56361

(218) 338-2060

www.ShowcaseHomesMN.com

License # BC-20332830

AVAILABLE OPTIONS

Showcase Homes offer a wide variety of options and upgrades, so your home will truly reflect your preferences and lifestyle. Here are just few that are available.*

Windows & Doors

Many sizes, styles and finishes are available including double hung, casement, awning windows and French style patio doors

Cabinetry Upgrades

- **Wood Species:** cherry, maple, alder, walnut, hickory
- **Finish Upgrades:** wash stains, opaque enamel, glazes and more
- **Organizational Cabinets in the Kitchen:** mini pantry/spice, super susan, wall spice rack, tray divider, waste basket/recycle pull outs, super sink base and more
- **Larger Bathroom Vanities**

Countertop Upgrades

HD Laminates, hard surface materials like Corian, Cambria, Silestone

- **Steeper Roof Pitches**
- **Fiber Cement Siding**
- **Microwave-Range Hood Combinations**
- **Vaulted Ceiling In The Kitchen, Dining & Living Room**
- **Knotty Pine Ceilings with Cedar Beams**

** Some options are at extra cost*